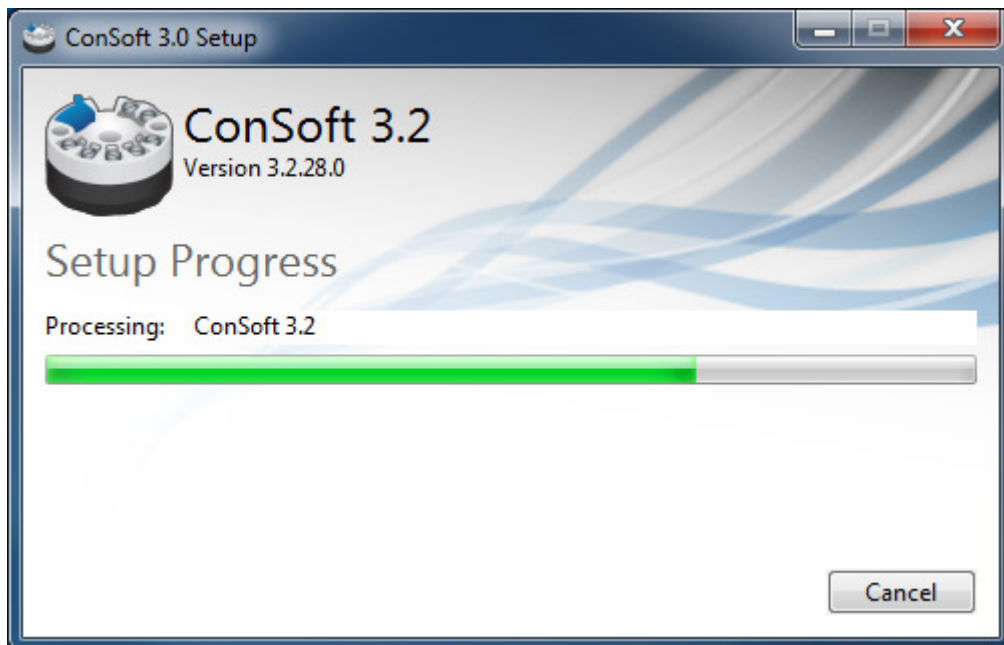
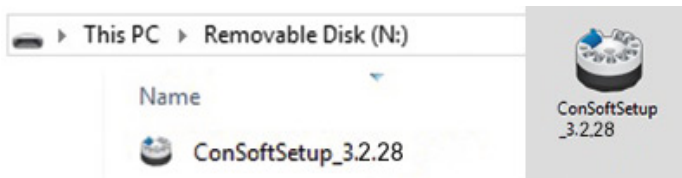


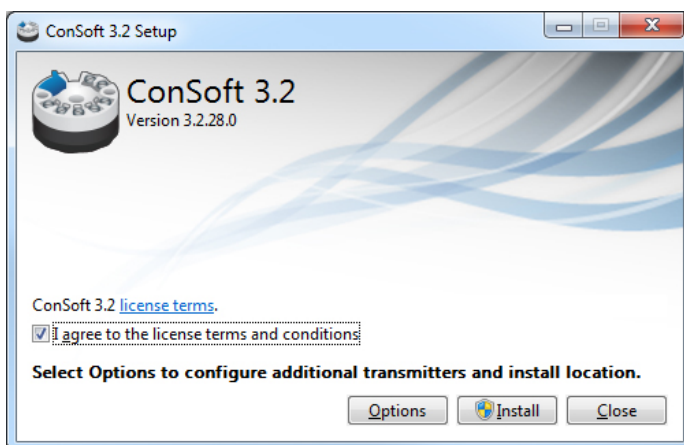
Quick Guide

Installation of ConSoft 3

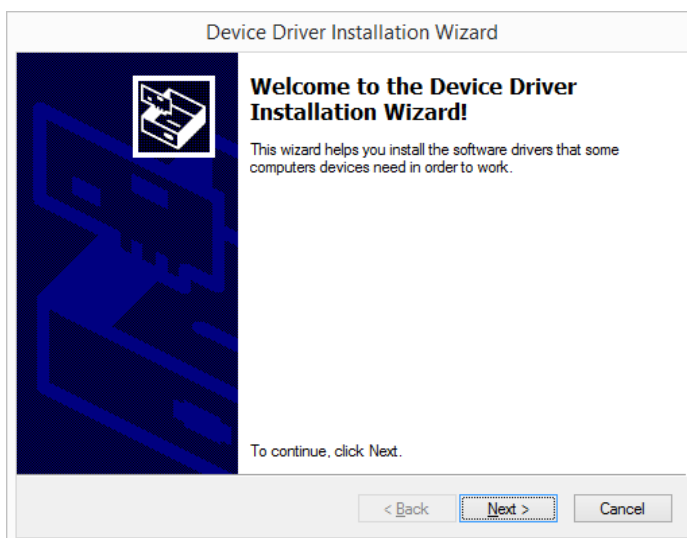




1. Locate the executable setup file "ConSoftSetup_3". Double clicking on this file starts the installation process

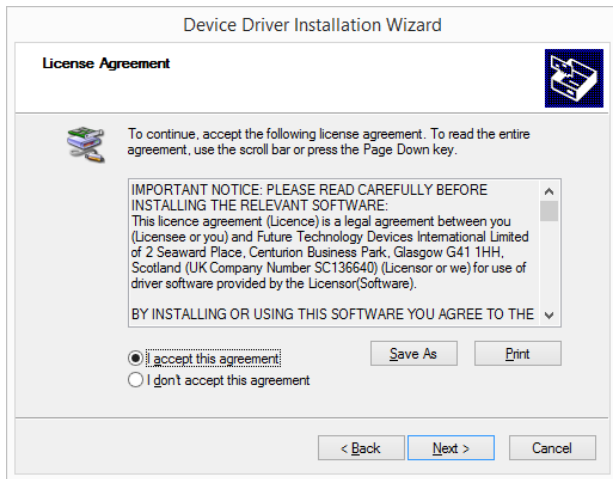


2. Read the license terms and agree, click on [Install] to start the installation.

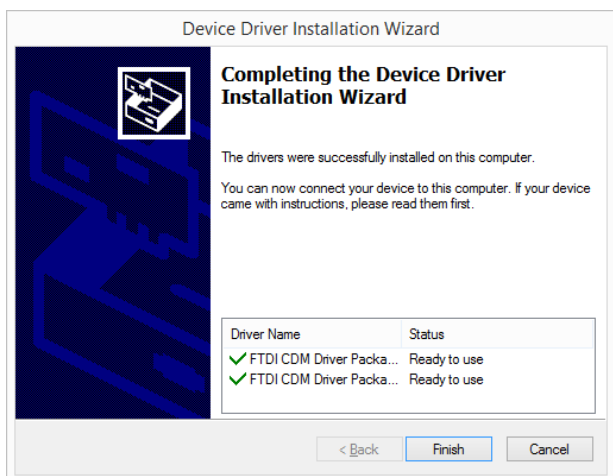
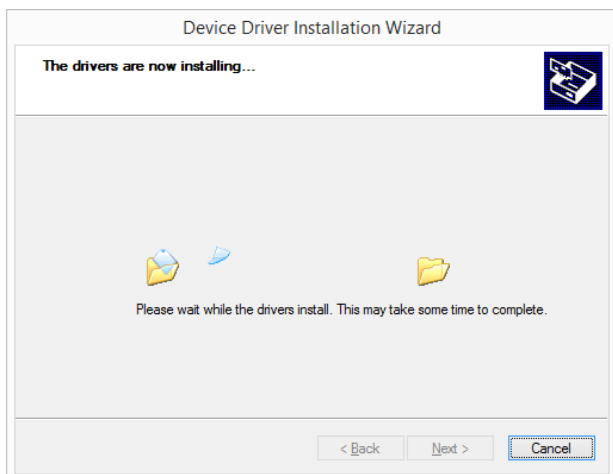


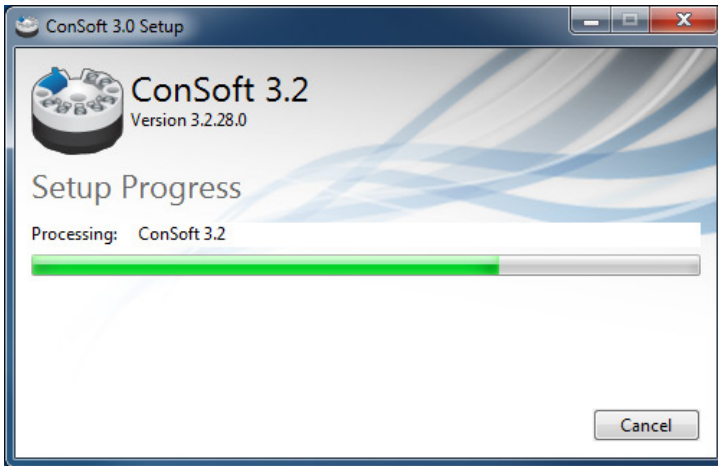
3. Installation of drivers for the USB-Interface will start, click on [Next].

4. Read and accept the license agreement, click on [Next].

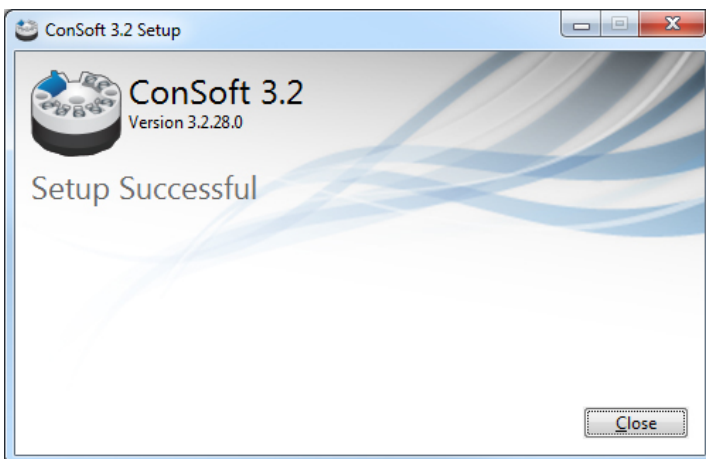


5. The drivers for the USB-Interface are installed. Click on [Finish] to continue with the installation of ConSoft 3.

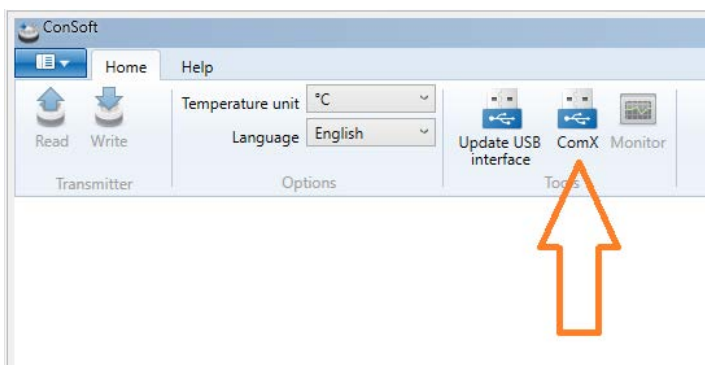
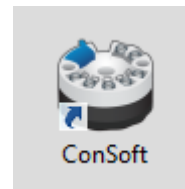




6. The installation of ConSoft 3 continues.



7. ConSoft 3 is installed and ready for use, click on [Close].



New button called "ComX" for Selection of USB-port for ICON-X modem.