

APAQ R130^{TC}

Programmable 2-wire Transmitter for Thermocouple



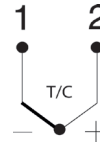
The APAQ R130^{TC} is a modern transmitter with high reliability and great performance. External influences such as ambient temperature, vibration, moisture and EMC interference have minimal influence on the measurement result, thanks to the robust design.

- Type: Digital
- Input: TC
- Output: 4-20 mA
- Isolation: Unisolated
- Measuring channels: 1 channel

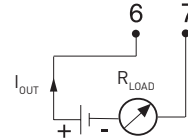
Specifications:

Input	2-wire connection
TC type B - Pt30Rh-Pt6Rh (IEC 60584)	0...+1820 °C / +32...+3308 °F
TC type E - NiCr-CuNi (IEC 60584)	-270...+1000 °C / -454...+1832 °F
TC type J - Fe-CuNi (IEC 60584)	-210...+1200 °C / -346...+2192 °F
TC type K - NiCr-NiAl (IEC 60584)	-270...+1300 °C / -454...+2372 °F
TC type N - NiCrSi-NiSi (IEC 60584)	-270...+1300 °C / -454...+2372 °F
TC type R - Pt13Rh-Pt (IEC 60584)	-50...+1750 °C / -58...+3182 °F
TC type S - Pt10Rh-Pt (IEC 60584)	-50...+1750 °C / -58...+3182 °F
TC type T - Cu-CuNi (IEC 60584)	-270...+400 °C / -454...+752 °F
Adjustments	
Minimum span	
TC type B	700 °C / 1260 °F
TC type R, S,	300 °C / 540 °F
TC type E, J, K, T	50 °C / 90 °F
TC type N	100 °C / 180 °F
Zero adjustments	Any value within range limits
Output	4-20 mA, temperature linear
Sensor failure indication	Upscale (≥ 21.0 mA) or downscale (≤ 3.6 mA)
NAMUR compliance	Current limitations and failure currents acc. to NAMUR NE 43
Response time	0.4 to 26 s, adjustable filtering level
Ambient temperature	
Storage and operation	-40 to +85 °C / -40 to +185 °F
Galvanic isolation	None
Power supply	6 to 32 VDC
Typical accuracy	Max. of (CJC not included)
TC type R, S, T	± 2.0 °C or ± 0.2 % of span / ± 3.6 °F or ± 0.2 % of span
TC type B (<100 °C / <212 °F)	not specified
TC type B (100 °C...400 °C / 212 °F...752 °F)	± 10 °C / ± 18 °F
TC type B (>400 °C / >752 °F)	± 2.0 °C or ± 0.2 % of span / ± 3.6 °F or ± 0.2 % of span
TC type E, J, K	± 1 °C or ± 0.2 % of span / ± 1.8 °F or ± 0.2 % of span
TC type N (-100...+1300 °C)	± 1 °C or ± 0.2 % of span / ± 1.8 °F or ± 0.2 % of span
TC type N (-270...-100 °C)	± 2.0 °C / ± 3.6 °F
Mounting	35 mm DIN rail acc. to EN 60715
Vibration	Acc. to IEC 60068-2-6, test Fc, 10...2000 Hz, 5 g
EMC	EN 61326-1 and EN 61326-2-3
Configuration	App Inor Connect via NFC™

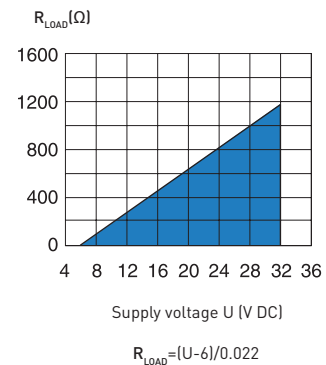
Input connections



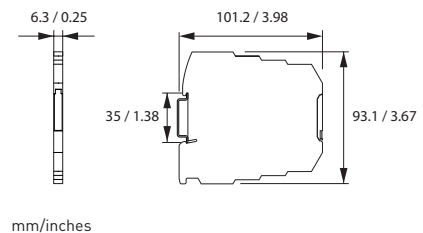
Output connections



Output load diagram



Dimensions



Ordering information

APAQ R130^{TC}

70R1300211